



INDOFINE Chemical Company, Inc.

121 Stryker Lane, Bldg. 30, Suite 1 • Hillsborough, NJ 08844 • U.S.A.

Phone: (908) 359-6778 • FAX: (908) 359-1179

website: www.indofinechemical.com

e-mail: chemical@indofinechemical.com

CERTIFICATE OF ANALYSIS

Catalog Number: 020233S

Product Name: CATALPOL with HPLC

CAS Number: [2415-24-9]

Lot Number: 1605792

Chemical Formula: C₁₅H₂₂O₁₀

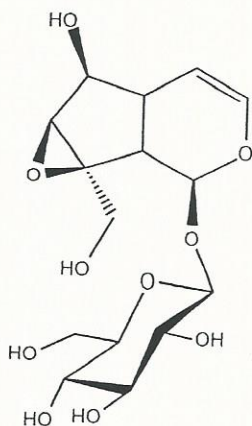
Molecular Weight: 362.34

Loss on Drying: 0.8%

Appearance: Off-white crystalline powder

Storage: Store in a cool, dry place

Purity(HPLC): 98.62%





INDOFINE Chemical Company, Inc.

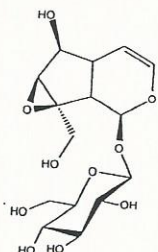
121 Stryker Lane, Bldg. 30, Suite 1 • Hillsborough, NJ 08844 • U.S.A.

Phone: (908) 359-6778 • FAX: (908) 359-1179

website: www.indofinechemical.com

e-mail: chemical@indofinechemical.com

HPLC ANALYSIS



Catalog No.: 020233S

Product Name: Catalpol

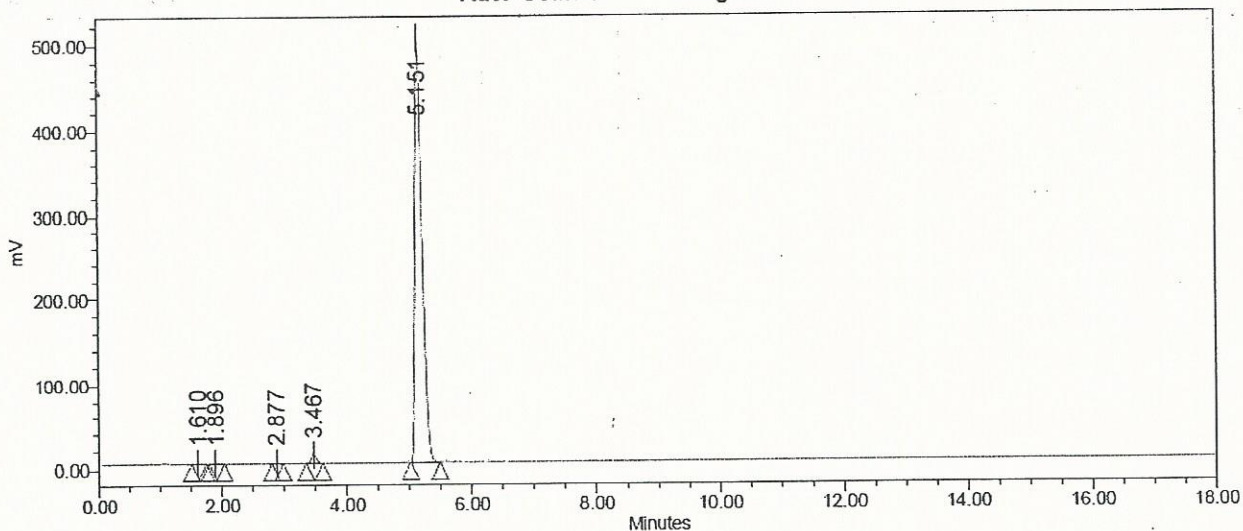
Lot No.: 1605792

SAMPLE INFORMATION

Sample Name: Catalpol
Sample Type: Unknown
Vial: 1:C,4
Injection #: 1
Injection Volume: 10.00 ul
Run Time: 20.0 Minutes

Sample Set Name:
Acq. Method Set: Catalpol
Processing Method: Samples
Channel Name: SATIN
Proc. Chnl. Descr.:

Auto-Scaled Chromatogram



Peak Results

Name	RT	Area	% Area	USP Plate Count	USP Resolution
1	1.610	3007	0.07	1552.86	
2	1.896	2915	0.07	3419.73	2.00
3	2.877	2126	0.05	5891.80	7.47
4	3.467	49296	1.19	10254.03	4.38
5	5.151	4095789	98.62	9049.67	9.32